



# Money Follows the Person

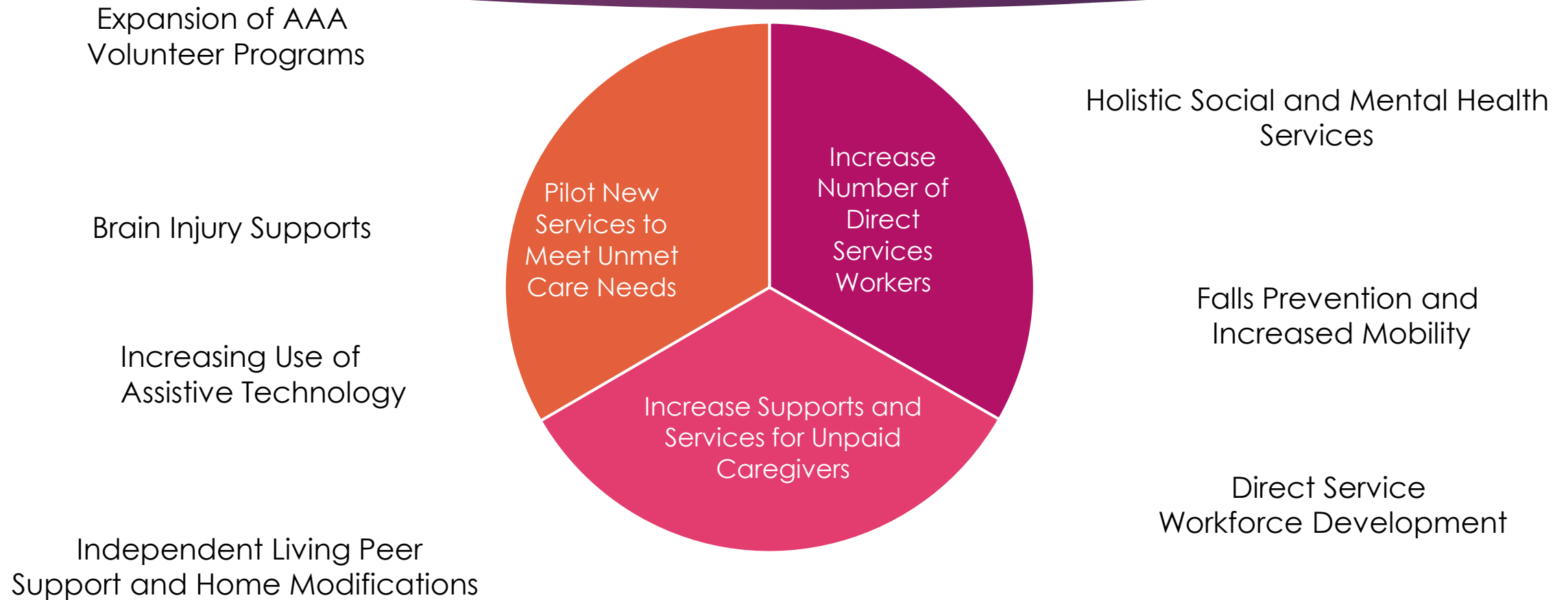
CHANGE, GROWTH, AND EVOLUTION

# MFP - History and Future Evolution

- ▶ Started in Vermont in 2011 to transition individuals from nursing home to community
- ▶ Has been reauthorized multiple times (enduring uneven funding cycles)
- ▶ Authorized until 2025
- ▶ In 2021, received additional \$5M Capacity Building Grant
- ▶ Post Pandemic Challenges
- ▶ Movement in Congress for potential permanency
  - ▶ New Programmatic Terms and Conditions
  - ▶ CMS Memo for Additional Supplemental Services
  - ▶ Rewrite of MFP Operations Protocol

# Current Capacity Building Grant Initiatives

## Supplemental Grant Initiative Themes



## Using Capacity Building Funds to Meet New Challenges

As Capacity Grant initiatives are rolled out, looking at remaining funds to meet additional challenges

Needs of Individuals stuck in acute-care settings led to an additional CBG initiative around discharge planning for complex care patients

# Post- Pandemic Challenges

MFP faces the same challenges and constraints as other DAIL programs; the two greatest are:

1. Lack of Workforce - Direct Support Worker shortage affects ability to safely stay in community placements
2. Lack of affordable, accessible housing and fewer qualified AFC providers available to care for an increasingly complex population.

The work of the Capacity Building initiatives is one avenue to address these challenges. Adding Supplemental Services is another.

**For MFP, lack of direct support workers and limited housing options greatly impacts our ability to, in good conscience, transition individuals from hospitals and nursing homes to the community.**

**2021 MFP Transitions : 81**

**2022 MFP Transitions (as of 11/09/2022) : 59**

# MFP Programmatic Terms and Conditions

New PTC's released by CMS in  
September 2022

Will require changes in MFP  
staffing and program operations

Codified additional  
demonstration services

Addition of New Data Specialist

Addition of Increased Focus on Housing  
Development with Potential Additional  
Staffing Requirement ( \$ for small states?)

Increased Data Collection, Planning,  
Reporting Requirements, and Quality  
Measures

Added demonstration services (currently only  
transition funds) in housing supports, food  
supplement funds, and transition supports. MFP  
will start with food supplement funds

# MFP Operations Protocol

VT has offered MFP since 2011 – is what we are doing still serving our participants while remaining true to the vision of Money Follows the Person?

Are we serving everyone we could be serving?

Does the amount of transition funds still make sense?

Are other housing models possible?

What current protocols need adjusting?

What can we learn from other states?

As we redo our operations protocol in 2023, we will be looking at these questions and more, as well as new CMS guidelines, in order to refresh the MFP program

# Vermont is a community

Your ideas, concerns, and advice are critical to the strength and success of MFP and we look forward to continuing to work with advocates, organizations, and the community at large as we evolve the work of MFP and the Capacity Grant initiatives.

A graphic with a dark blue and purple geometric background and the text "THANK YOU!" in white. The background consists of overlapping, semi-transparent triangles in various shades of blue and purple, creating a low-poly, crystalline effect. The text "THANK YOU!" is written in a bold, white, sans-serif font, centered horizontally and slightly above the vertical center. The overall aesthetic is modern and professional.

THANK YOU!



# Wrap-Up

Questions/ Feedback?

Please feel free to contact the MFP staff at:

- Lynne Cleveland Vitzthum, Project Director

[lynne.clevelandvitzthum@vermont.gov](mailto:lynne.clevelandvitzthum@vermont.gov)

- Addie Armstrong, Senior Planner

[addie.armstrong@vermont.gov](mailto:addie.armstrong@vermont.gov)

